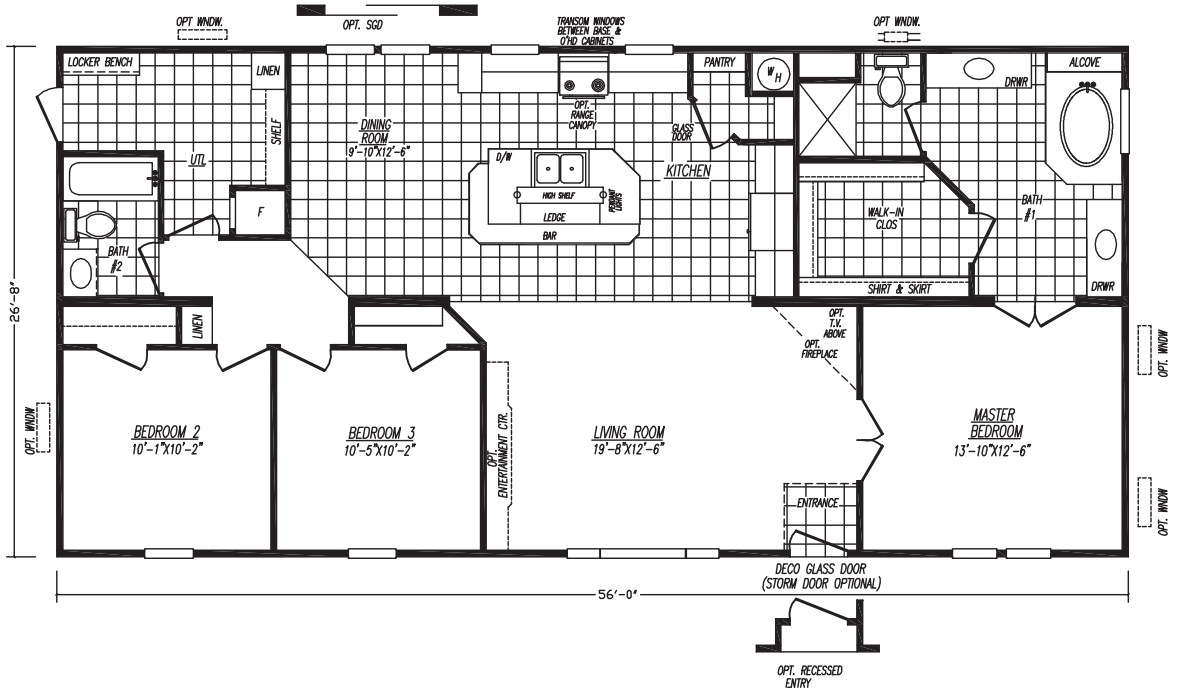




The Denali Series

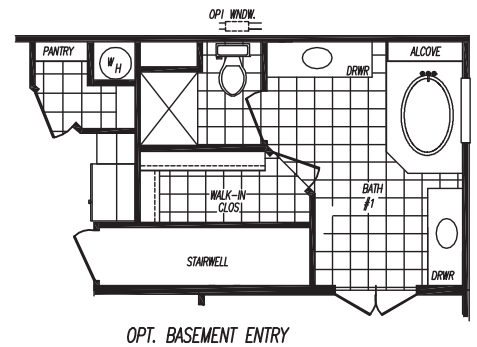
Adventure Homes looks forward to offering you the best value in manufactured housing. We offer unbelievable eye appeal, product standards, and the flexibility you need with every home we build. Additionally, we offer an award winning sales and service team to enhance your value even more. We look forward to assisting you and welcoming you into our family of satisfied homeowners!



**YOUR AUTHORIZED
ADVENTURE HOMES
RETAILER**



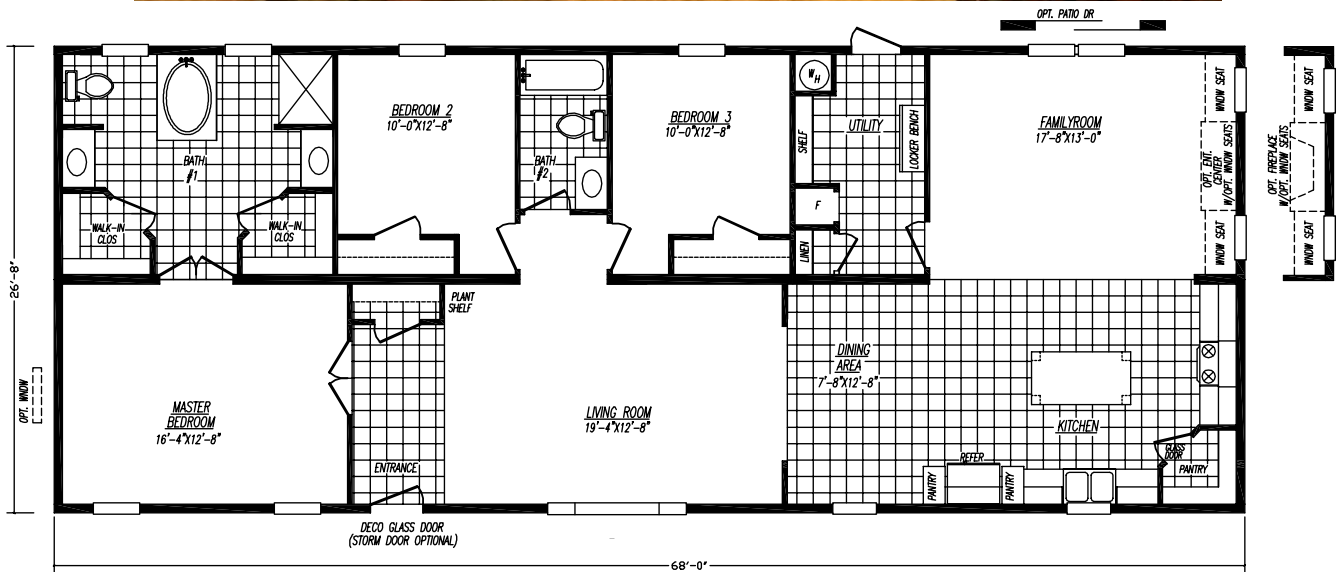
Luxury and Comfort for Less





The Denali Series

2868-1



Every Adventure home is built with premium construction materials in a climate-controlled enclosed building center. This helps eliminate weather-damaged building materials and weather-related building delays. These state-of-the-art facilities ensure precise and quality construction. All Adventure homes meet, and in many cases exceed HUD code.



Luxury and Comfort for Less

Adventure Homes of Indiana 1119 Fuller Drive Garrett, IN 46738 877-510-1955



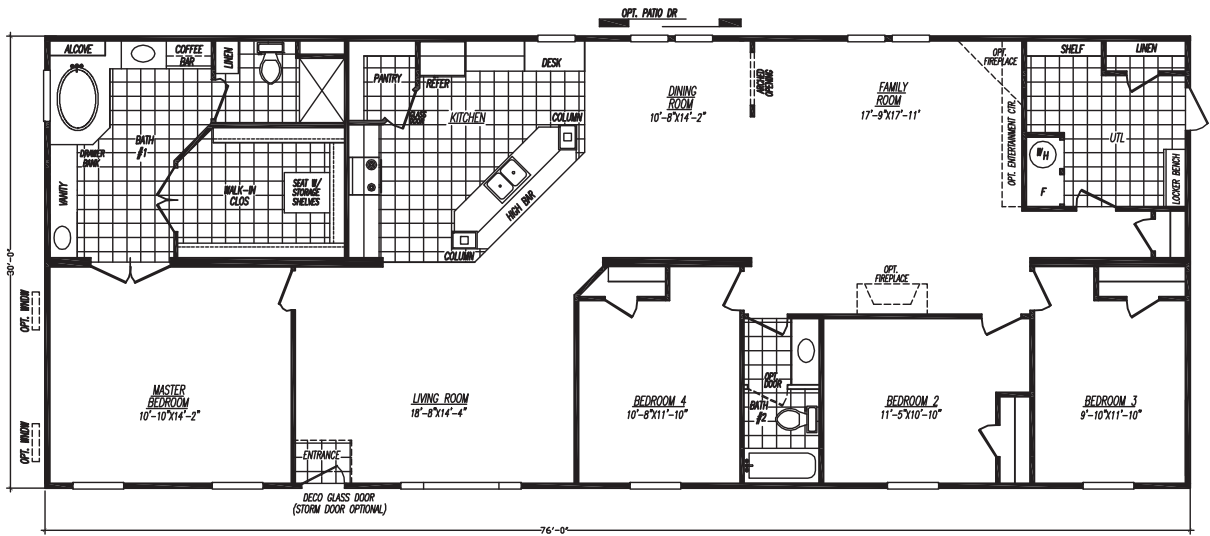
The Denali Series

0764L 4BR 2BA

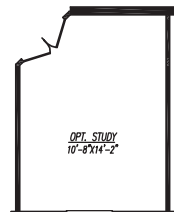
Adventure Homes looks forward to offering you the best value in manufactured housing. We offer unbelievable eye appeal, product standards, and the flexibility you need with every home we build. Additionally, we offer an award winning sales and service team to enhance your value even more. We look forward to assisting you and welcoming you into our family of satisfied homeowners!



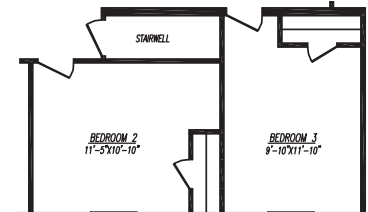
Shown with Stone Interior Package



**YOUR AUTHORIZED
ADVENTURE HOMES
RETAILER**



OPT. STUDY



OPT. BASEMENT ENTRY



Luxury and Comfort for Less

Adventure Homes of Indiana 1119 Fuller Drive Garrett, IN 46738 877-510-1955

Denali Series Standards



Exterior Standards:

Thermal Zone III Construction

Foundation Ready Chassis w/ Outriggers 96" O.C.
Nominal 3/12 Roof Pitch
Vinyl siding by "Stylecrest" w/ Lifetime Warranty
25 year "IKO" Fiberglass Shingles
7/16" OSB Roof sheathing
Dormer for Enhanced Eye Appeal
2x6 Floor Joists 16" O.C. (28' Wides)
2x8 Floor Joists 16" O.C. (32' Wides)
12" Raised Panel Shutters @ FDS Only
R-32 Ceiling Insulation
2x6 Sidewalls with R-19 Insulation
R-32-19-11 Insulation
7 1/2 Ft. Sidewall Height w/ Cathedral Ceilings
Vinyl Windows Throughout with Grids
Picture Window in Living Room
3/8" OSB Exterior Wrap - All Around
OSB Floor Decking
Residential Front Door w/ Glass (Storm is optional)
Cottage Rear Door
Dead Bolt Locks at Front and Rear (Keyed Alike)
Light Fixtures at all Exterior Doors
Detachable Hitch

Interior Standards:

Stomp Ceiling w/ Mate Line Plate Shipped Loose
Ceiling Fan Installed in Living Room
Side Panel Drapes in Living Room & Dining Area
Valances in all Bedrooms
Lighting Package:
 Chandelier in Dining Area
 Vanity Lights above all Lavy's
 Recessed Can Lights in Kitchen
 Renaissance Mirrors in Bathrooms
3.5" Cove Molding in Main Living Area
2 1/4 Door Casing and Window Trim - Main Living Area
Flat Trim in Remainder of Home
Utility Room Door
16 oz. Calaber Carpet by Shaw Industries
Diamond Floor No Wax Vinyl Flooring by "Congoleum"
Interior Décor Selections
Full Length Interior Doors w/ Return Air Grills Above
Interior Doors to Match Interior Trim
Door Stop on all 3 Sides (Except Closets)
Accent Split Wall Panels w/ Chair Rail in Living Room
Oil rubbed Bronze Interior Door Hardware T/O

Electrical, Plumbing & Heating:

Perimeter Heat Registers (Where Available)

In-Floor Heat Duct Cross-Over
Gas Furnace w/ 100 AMP Service Box
40 Gallon Electric Water Heater
Digital Thermostat
Chandelier in Dining Area
Recessed Can Lights in Kitchen
(2) Dimmer Switches: Chandelier & Kitchen Can Lights
Pendant Lights above Kitchen Island
Exterior Flood Lights (2)
Whole House Shut-Off Valve Near Water Heater
Water Shut- Off Valves Throughout
Exterior Faucet - FDS (if Possible)
Exterior Recept - FDS
Media Jack (1) in Living Room

Kitchen Standards:

Hardwood Cabinet Doors Throughout
Base & Center Shelves w/ Adjustable Shelves in O/H
Cabinet Cove Molding
(2) Transom Windows - Varies by Model
Choice of Whirlpool Appliance Color (Black or White):
 22 C.F. Side-by-Side Refer w/ Ice & Water in Door
 Dishwasher
 Microwave over Range
 Deluxe Electric Range
Glass Pantry Door - Varies by Model
Upgraded Kitchen Sink (White or Black)
Single Lever Kitchen Faucet (White or Pewter)
Ceramic Backsplash T/O
Ceramic Countertop Edging in Kitchen Only
Oil Rubbed Bronze Cabinet Pulls Throughout
Concealed Cabinet Door Hinges

Bath Standards:

China Bathroom Sinks w/ Single Lever Faucets
Glamour Bath w/ Platform Tub & 48" Fiberglass Shower
Bathroom Lavy Toe Kicks with Feet
60" 1 Pc. Fiberglass Tub/Shower - Guest Bath
Single Lever Tub & Shower Faucets
Medicine Cabs over Commode (Hall Bath)
Tissue Holders Installed in Each Bath
Renaissance Mirrors in Bathrooms
Power Exhaust Fans in all Bath Rooms
China "Water Saver" Commodes
Laminated Countertops and Ceramic Backsplash
Valance at Tub/Shower - Guest Bath